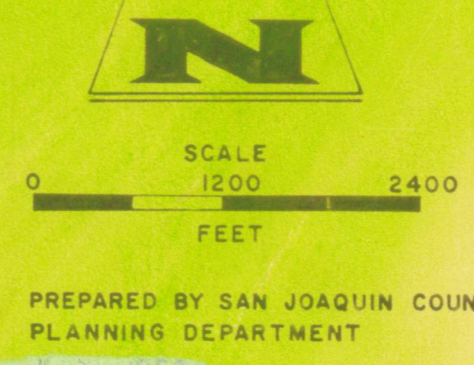
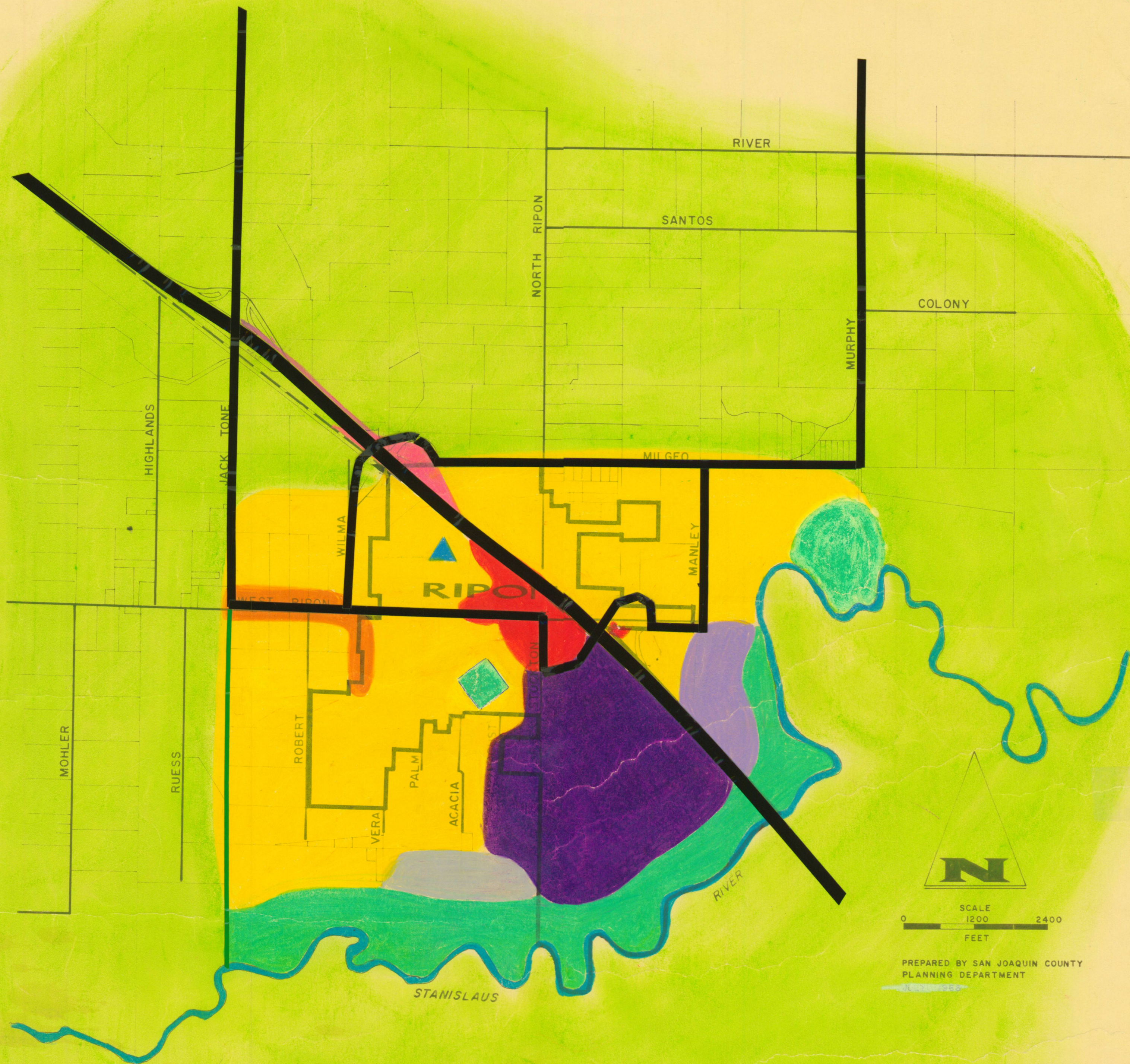


RIPON AREA

GENERAL PLAN 1990



- | | |
|------------------------------------|------------------------------------|
| ● RESIDENTIAL, SUBURBAN DENSITY | ● CONSERVATION AREAS |
| ● RESIDENTIAL, LOW DENSITY | ● WATER |
| ● RESIDENTIAL, MEDIUM-HIGH DENSITY | ▲ HIGH SCHOOLS |
| ● COMMUNITY SHOPPING CENTERS | ● UNIVERSITIES AND JUNIOR COLLEGES |
| ● MAJOR RETAIL AND OFFICE AREAS | ● INSTITUTIONAL USES |
| ● GENERAL BUSINESS | ● MILITARY INSTALLATIONS |
| ● HIGHWAY SERVICE AREAS | ▬ FREEWAYS |
| ● RESTRICTIVE LIGHT INDUSTRIAL | ○ SCENIC FREEWAYS |
| ● GENERAL INDUSTRIAL | ▬ ARTERIALS |
| ● INDUSTRIAL RESERVE | ▬ RECREATION ROADS |
| ● AGRICULTURE | ▬ RAILROAD |
| ● FOOTHILL PASTURE | ✈ AIRPORT |
| ● COMMUNITY PARK | ⚓ PORT |
| ● RECREATION | |

708.46
 Recommended for adoption by the San Joaquin County Planning Commission on May 1, 1969 by RESOLUTION NO. PC-31-69
 Adopted by the San Joaquin County Board of Supervisors on May 29, 1969 by RESOLUTION NO. R-69-881
 ATTEST: RALPH W. EPPERSON
 County Clerk and Ex-officio
 Clerk of the Board of Supervisors
 of the County of San Joaquin,
 State of California
 by Sally Aup
 Deputy Clerk

726.004 4
 708.46