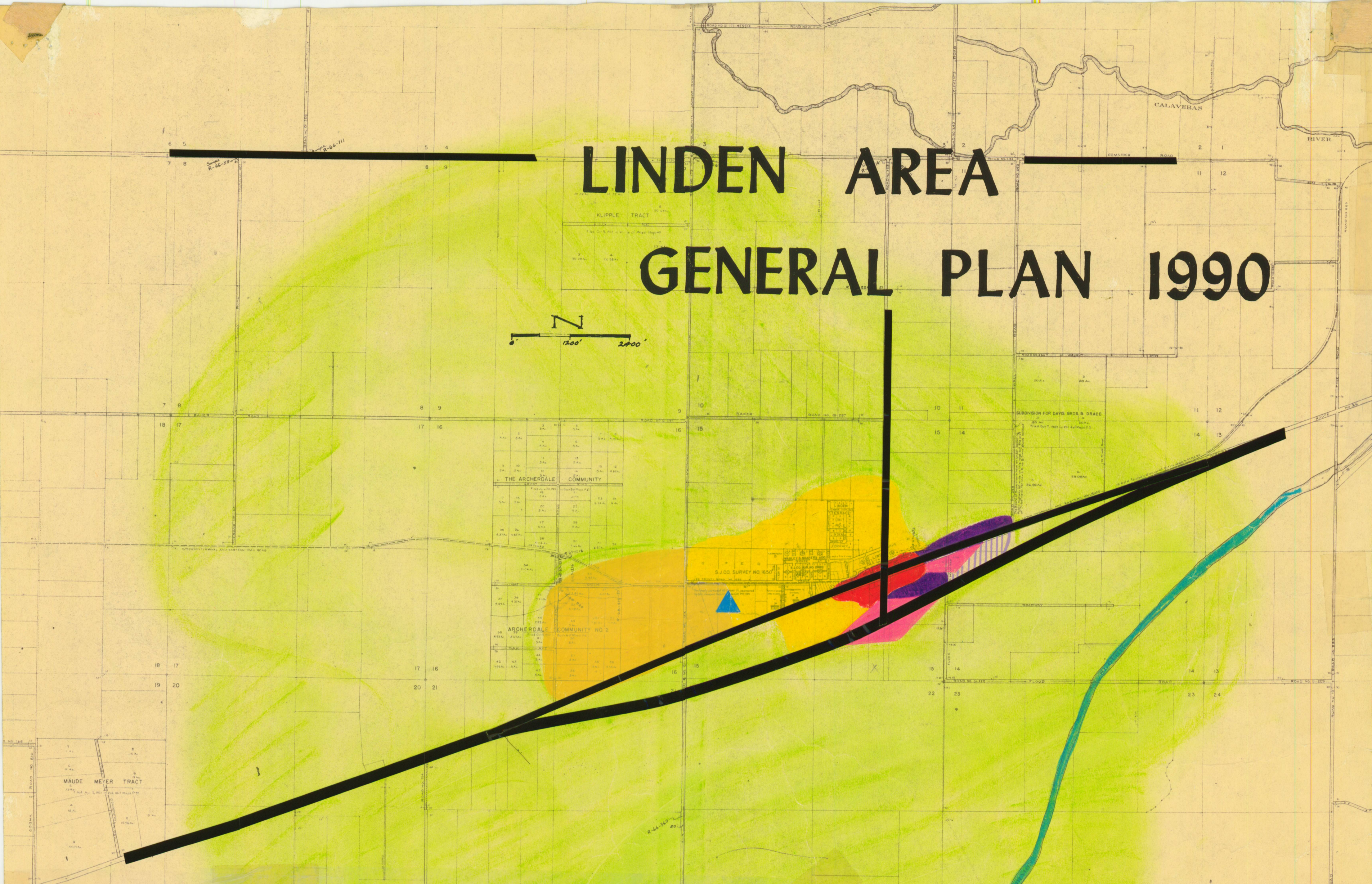
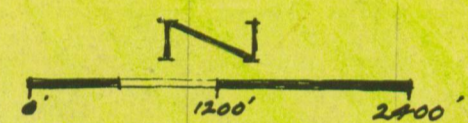


LINDEN AREA

GENERAL PLAN 1990



- | | | | |
|--|----------------------------------|--|----------------------------------|
| | RESIDENTIAL, SUBURBAN DENSITY | | CONSERVATION AREAS |
| | RESIDENTIAL, LOW DENSITY | | WATER |
| | RESIDENTIAL, MEDIUM-HIGH DENSITY | | HIGH SCHOOLS |
| | COMMUNITY SHOPPING CENTERS | | UNIVERSITIES AND JUNIOR COLLEGES |
| | MAJOR RETAIL AND OFFICE AREAS | | INSTITUTIONAL USES |
| | GENERAL BUSINESS | | MILITARY INSTALLATIONS |
| | HIGHWAY SERVICE AREAS | | FREEWAYS |
| | RESTRICTIVE LIGHT INDUSTRIAL | | SCENIC FREEWAYS |
| | GENERAL INDUSTRIAL | | ARTERIALS |
| | INDUSTRIAL RESERVE | | RECREATION ROADS |
| | AGRICULTURE | | RAILROAD |
| | FOOTHILL PASTURE | | AIRPORT |
| | COMMUNITY PARK | | PORT |
| | RECREATION | | |

Recommended for adoption by the San Joaquin County Planning Commission on May 1, 1969 by RESOLUTION NO. PC-31-69
 Adopted by the San Joaquin County Board of Supervisors on May 29, 1969 by RESOLUTION NO. R-69-381

ATTEST: RALPH W. EPPERSON
 County Clerk and Ex-officio
 Clerk of the Board of Supervisors
 of the County of San Joaquin,
 State of California
 by *Sally Luff*
 Deputy Clerk



726002 4